



stonebranch

Universal Controller 7.2.x

Connections

© 2022 by Stonebranch, Inc. All Rights Reserved.

- 1. Connections 3
 - 1.1 Connections Overview 4
 - 1.2 Email Connections 5
 - 1.2.1 Copying Email Connections 12
 - 1.3 Database Connections 15
 - 1.3.1 Copying Database Connections 20
 - 1.4 SAP Connections 23
 - 1.4.1 Copying SAP Connections 29
 - 1.5 PeopleSoft Connections 32
 - 1.5.1 Copying PeopleSoft Connections 36

Connections



Overview

[Connections Overview](#)



Types of Connections

[Email Connections](#)

[Database Connections](#)

[PeopleSoft Connections](#)

[SAP Connections](#)



The information on these pages also is located in the [Universal Controller 7.2.x Resources.pdf](#).

Connections Overview

Universal Controller Connections are records that provide server information required by Universal Controller.

Email Connections	Provide email server information required for the Controller to send an email.
Database Connections	Provide database server information required for running SQL tasks and Stored Procedure tasks .
SAP Connections	Provide SAP server information required for running SAP tasks .
PeopleSoft Connections	Provide PeopleSoft server information required for running PeopleSoft tasks .

Email Connections

- [Overview](#)
- [Creating an Email Connection](#)
 - [Email Connection Details](#)
 - [Email Connection Details Field Descriptions](#)

Overview

Email connections provide all of the email server information necessary for Universal Controller to send emails.

Email connections are used these ways within the Controller:

- An [Email Task](#) uses the Email connection to generate emails independent of tasks.
- An [Email Notification](#) uses the Email connection to generate notifications related to tasks.
- [Agents](#), [OMS Servers](#), and [Cluster Nodes](#) use the Email connection to generate email notifications.
- [System Operations](#) use Email connections to generate system notifications.

Email Connections can receive Email Notifications when:

- An [Agent](#) or [OMS Server](#) goes down or comes back up.
- A [Cluster Node](#) goes Offline or becomes Active.
- An [Email Notification](#) is associated with a task.

Note

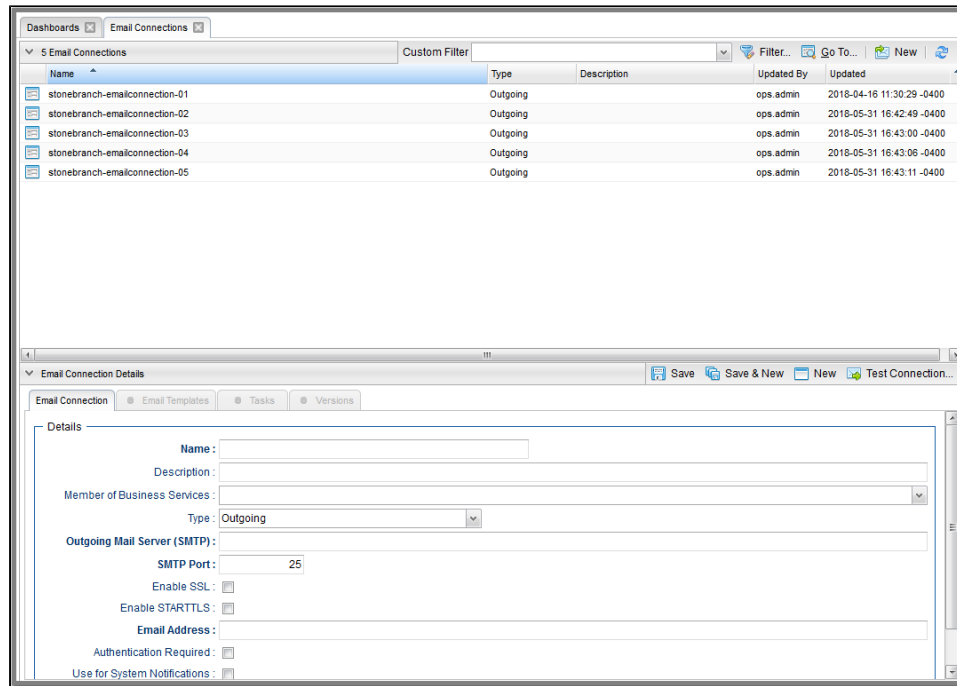


Email Notifications on Cluster Nodes cannot be exported; therefore, they cannot be imported. You must set up new Email Notifications for Cluster Nodes whenever an [export](#) / [import](#) has been run.

Creating an Email Connection

Step 1 From the [Agents & Connections](#) navigation pane, select **System > Email Connections**. The Email Connections list displays.

Below the list, Email Connection Details for a new Email Connection displays.



Step 2 Enter / select Details for a new Email Connection, using the [field descriptions](#) below as a guide.

- Required fields display an asterisk (*) after the field name.
- Default values for fields, if available, display automatically.

To display more of the Details fields on the screen, you can either:

- Use the scroll bar.
- Temporarily [hide the list](#) above the Details.
- Click the **New** button above the list to display a pop-up version of the Details.

Step 3 Click a **Save** button. The Email Connection is added to the database, and all buttons and tabs in the Email Connection Details are enabled.

Note

To [open](#) an existing record on the list, either:

- Click a record in the list to display its record Details below the list. (To clear record Details below the list, click the **New** button that displays above and below the Details.)
- Clicking the [Details icon](#) next to a record name in the list, or right-click a record in the list and then click **Open** in the [Action menu](#) that displays, to display a pop-up version of the record Details.
- Right-click a record in the a list, or open a record and right-click in the record Details, and then click **Open In Tab** in the [Action menu](#) that displays, to display the record Details under a new tab on the record list page (see [Record Details as Tabs](#)).

Email Connection Details

The following Email Connection Details is for an existing Email Connection. See the [field descriptions](#), below, for a description of all fields that display in the Email Connection Details.

The screenshot shows a web application window titled "Email Connection Details: stonebranch-emailconnection-01". At the top, there are several buttons: "Update", "Test Connection...", "Copy", "Delete", "Refresh", and "Close". Below these are tabs for "Email Connection", "Email Templates", "Tasks", and "Versions". The main content area is titled "Details" and contains the following fields:


- Name:** stonebranch-emailconnection-01
- Version:** 1
- Description:** (empty text box)
- Member of Business Services:** (dropdown menu)
- Type:** Outgoing (dropdown menu)
- Outgoing Mail Server (SMTP):** mail.server 1
- SMTP Port:** 25
- Enable SSL:**
- Enable STARTTLS:**
- Email Address:** stonebranch@stonebranch.com
- Authentication Required:**
- Use for System Notifications:**


For information on how to access additional details - such as [Metadata](#) and complete [database Details](#) - for Email Connections (or any type of record), see [Records](#).

Email Connection Details Field Descriptions

The following table describes the fields, buttons, and tabs that display in the Email Connection Details.

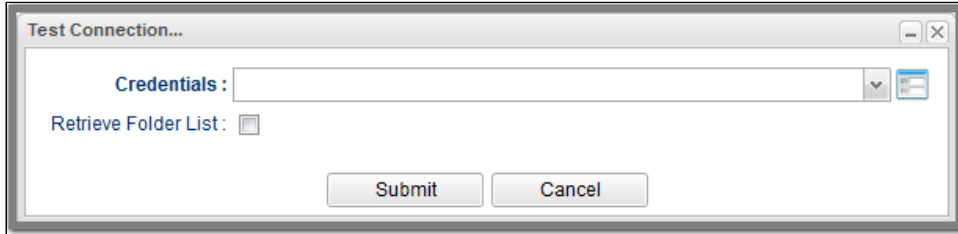
Field Name	Description
Details	This section contains detailed information about the Email Connection.
Name	Name (maximum 40 alphanumeric characters) used within the Controller to identify this resource. It is the responsibility of the user to develop a workable naming scheme for resources.
Version	System-supplied; version number of the current record, which is incremented by the Controller every time a user updates a record. Click the Versions tab to view previous versions. For details, see Record Versioning .
Description	Description of this record. (Maximum = 255 characters.)

Member of Business Services	<p>User-defined; Allows you to select one or more Business Services that this record belongs to. (You also can Check All or Uncheck All Business Services for this record.)</p> <p>You can select up to 62 Business Services for any record type, and enter a maximum of 2048 characters for each Business Service.</p> <p>If the Business Service Visibility Restricted Universal Controller system property is set to true, depending on your assigned (or inherited) Permissions or Roles, Business Services available for selection may be restricted.</p>
Type	<p>Type of Email Connection:</p> <p>Options:</p> <ul style="list-style-type: none"> • Outgoing • Incoming <p>Default is Outgoing.</p>
Outgoing Mail Server (SMTP)	If Type is Outgoing; Name or IP address of the outgoing email server.
SMTP Port	If Type is Outgoing; Port on the machine where the outgoing email server resides.
Incoming Mail Server (IMAP)	If Type is Incoming; Name or IP address of the incoming email server.
IMAP Port	If Type is Incoming; Port on the machine where the incoming email server resides.
Enable SSL	Enables SSL/TLS connectivity for your server.
Enable STARTTLS	Enables the use of the STARTTLS command (if supported by the server) to switch the connection to a TLS-protected connection before issuing any login commands. (An appropriate trust store must be configured so that the client will trust the server's certificate.)
Email Address	<p>If Type is Outgoing; Email address of the sender.</p> <p>Warning </p> <p>If the selected sender email address is invalid, or becomes invalid at any time after you create an Email Connection, all Email Notifications that specify that Email Connection will fail, but no warning will be issued. You must click the Test Connection button to test the Email Connection, which will generate an error message in the Console.</p>
Authentication Required	If Type is Outgoing; If enabled, User Name and Password are required.
User Name	If Authentication Required is enabled; user name that the Controller will use to connect to the server.
Password	<p>If Authentication Required is enabled; password that the Controller will use to connect to the server.</p> <p>(This field is cleared if the Email Connection is copied.)</p>

Use for System Notifications	<p>If Type is Outgoing; Indicates whether or not this Email Connection is to be used for system notifications.</p> <p>(This field is set to false if the Email Connection is copied.)</p> <p>Note </p> <p>Only one Email Connection can be used for system notifications. If this field is checked in an Email Connection Details, it will appear unchecked on all other Email Connection Details. If you then check this field in another Email Connection Details, it automatically will be unchecked from the Details in which it had been checked.</p>
Trash Folder	If Type is Incoming; Folder to use for deleted emails.
Metadata	This section contains Metadata information about this record.
UUID	Universally Unique Identifier of this record.
Updated By	Name of the user that last updated this record.
Updated	Date and time that this record was last updated.
Created By	Name of the user that created this record.
Created	Date and time that this record was created.
Buttons	This section identifies the buttons displayed above and below the Email Connection Details that let you perform various actions.
Save	Saves a new Email Connection record in the Controller database.
Save & New	Saves a new record in the Controller database and redisplay empty Details so that you can create another new record.
Save & View	Saves a new record in the Controller database and continues to display that record.
New	Displays empty (except for default values) Details for creating a new record.
Update	Saves updates to the record.

Test Connection

After saving the record to the database, click **Test Connection** to run a connection test.
 If the Email Connection Type is Incoming, clicking **Test Connection** causes a Test Connection... pop-up dialog to display



The following table describes the fields on the Test Connection... dialog:

Field	Description
Credentials	Credentials to be used to connect to the Email server.
Retrieve Folder List	Enabling this field instructs the Controller to retrieve a list of all the Folders within the connected User's mailbox.

Copy

Creates a [copy](#) of this Email Connection, which you are prompted to rename.

Delete

Deletes the current record.

Refresh

Refreshes any dynamic data displayed in the Details.


Close

For pop-up view only; closes the pop-up view of this Email Connection.

Tabs

This section identifies the tabs across the top of the Email Connection Details that provide access to additional information about the Email Connection.

Note

 For an Agent-Only installation of Universal Controller, the Email Templates and Tasks tabs do not display.

Email Templates

Provides a list of Email Templates that specify this Email Connection, and lets you create a new Email Template with its Email Connection field pre-populated with this Email Connection.
 This tab is enabled only if the Email Connection [Type](#) = Outgoing.

Tasks

Provides a list of [Email](#) tasks (for [Outgoing](#) Email Connections) and [Email Monitor](#) tasks (for [Incoming](#) Email Connections).
 It also lets you create a new Email task (from the Email Tasks list), or a new Email Monitor Task (from the Email Monitor Tasks list), with its Email Connection field pre-populated with this Email Connection.

Versions	Stores copies of all previous versions of the current record. See Record Versioning .
-----------------	---

Copying Email Connections

- [Overview](#)
- [Copying One or More Email Connections from an Email Connections List](#)
- [Copying an Email Connection from the Email Connection Details](#)
- [Copy Permissions](#)

Overview

You can make copies of all Universal Controller records, including Email Connections, using the standard method for [Copying a Record](#): selecting **Insert** on the [Action menu](#).

However, you also can use the Copy action on the Email Connections [Action menu](#) or the Copy button in the Email Connections Details.

Note



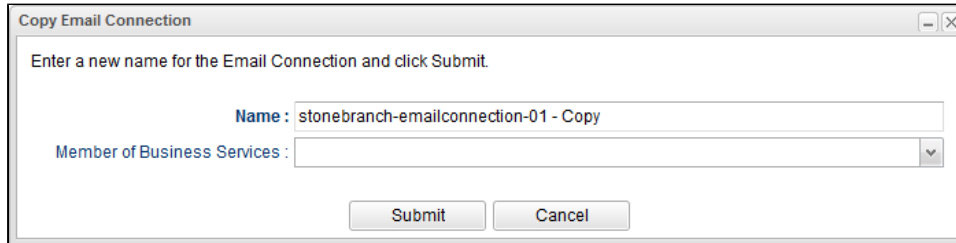
If you use the Copy action or Copy button to copy an Email Connection, the [Password](#) field is cleared and the [Use for System Notifications](#) field is set to false in the Email Connection copy.

Copying One or More Email Connections from an Email Connections List

Step 1	From the Agents & Connections navigation pane, select System > Email Connections to display the Email Connections list.
Step 2	Locate the Email Connection(s) you want to copy (see Filtering).

Step 3 Copy the Email Connection(s):**Copy One Email Connection**

1. Right-click the **Email Connection Name**.
2. On the [Action menu](#), select **Copy**. A Copy Email Connection pop-up dialog displays.



Copy Email Connection

Enter a new name for the Email Connection and click Submit.

Name : stonebranch-emailconnection-01 - Copy

Member of Business Services :

Submit Cancel

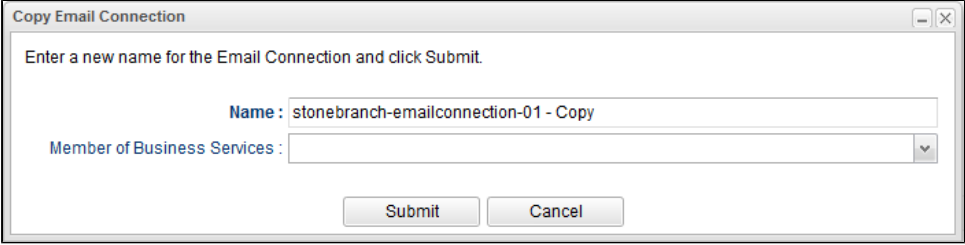
3. Enter a new name for the Email Connection and, optionally, select any [Business Services](#) that you want the Email Connection assigned to.
4. Click **Submit** to create a copy of the Email Connection.

Copy Multiple Email Connections

1. Ctrl-Click the Email Connections you want to copy.
2. Right-click any of the selected Email Connections.
3. On the [Action menu](#), select **Copy**.
4. On the Confirmation pop-up that displays, click **OK**. The copied Email Connections are added to the list, with **- Copy** added as a suffix to the Email Connection Name for each Email Connection. If an Email Connection with that **- Copy** name already exists, another copy is not created.

Copying an Email Connection from the Email Connection Details

- | | |
|---------------|---|
| Step 1 | Select an Email Connection from the Email Connection list. The Email Connection Details for that Email Connection displays. |
|---------------|---|

<p>Step 2</p>	<p>Either:</p> <ul style="list-style-type: none"> • Click the Copy button. • Right-click the Details to display the Action menu, and then click Copy. <p>A Copy Email Connection pop-up dialog displays.</p> 
<p>Step 3</p>	<p>Enter a new name for the Email Connection and, optionally, select any Business Services that you want the Email Connection assigned to.</p>
<p>Step 4</p>	<p>Click Submit to create a copy of the Email Connection.</p>

Copy Permissions

To copy an Email Connection, you must have both Read [permission](#) and Copy command permission for the Email Connection you are copying, in addition to having Create permission for the copied Email Connection.

Database Connections

- [Overview](#)
- [Creating a Database Connection](#)
- [Database Connection Details](#)
- [Database Connection Details Field Descriptions](#)

Overview

Database Connections provide all database server information required for Universal Controller to execute an [SQL task](#) or a [Stored Procedure Task](#).

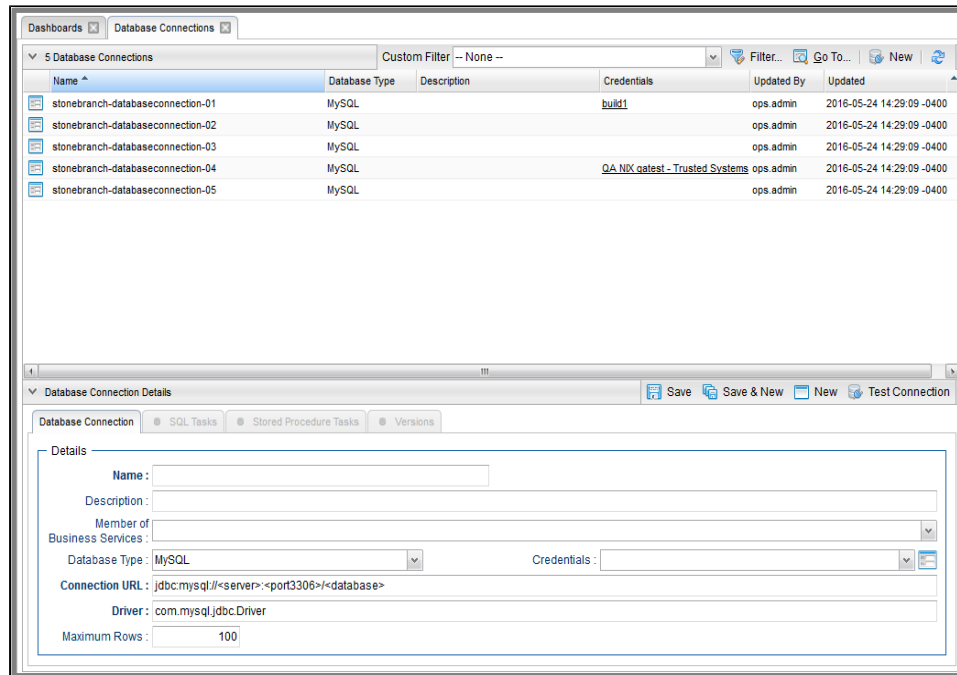
Database Connections can receive Email Notifications when:

- An [Agent](#) or [OMS Server](#) goes down or comes back up.
- A [Cluster Node](#) goes Offline or becomes Active.

Creating a Database Connection

Step 1 From the [Agents & Connections](#) navigation pane, select **System > Database Connections**. The Database Connections list displays.

Below the list, Database Connection Details for a new Database Connection displays.



Step 2 Enter / select Details for a new Database Connection, using the [field descriptions](#) below as a guide.

- Required fields display an asterisk (*) after the field name.
- Default values for fields, if available, display automatically.

To display more of the Details fields on the screen, you can either:

- Use the scroll bar.
- Temporarily [hide the list](#) above the Details.
- Click the **New** button above the list to display a pop-up version of the Details.

Step 3 Click a **Save** button. The Database Connection is added to the database, and all buttons and tabs in the Database Connection Details are enabled.

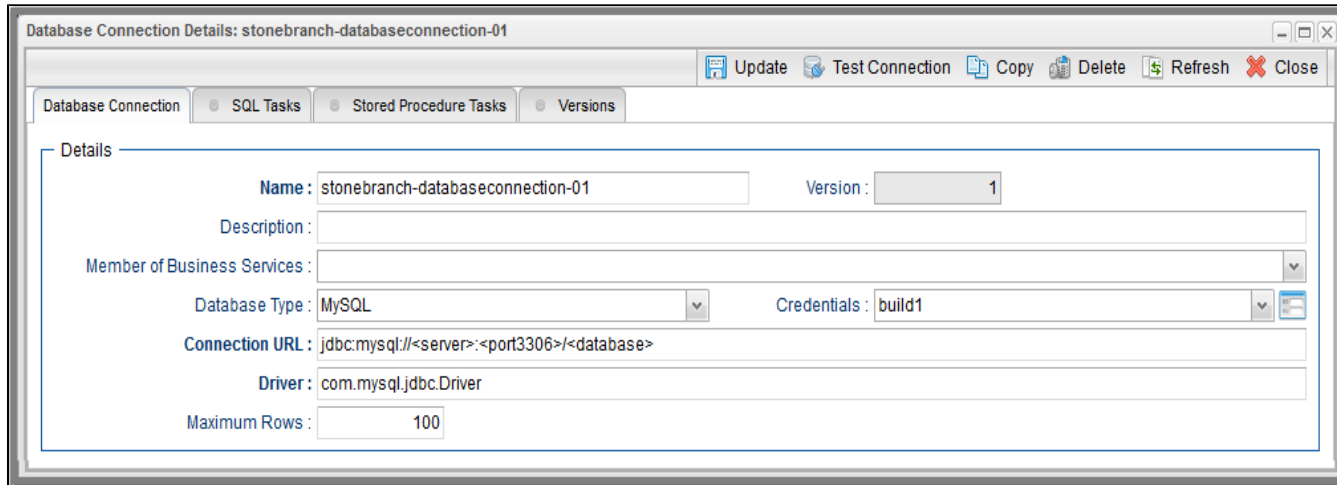
Note

To [open](#) an existing record on the list, either:

- Click a record in the list to display its record Details below the list. (To clear record Details below the list, click the **New** button that displays above and below the Details.)
- Clicking the [Details icon](#) next to a record name in the list, or right-click a record in the list and then click **Open** in the [Action menu](#) that displays, to display a pop-up version of the record Details.
- Right-click a record in the a list, or open a record and right-click in the record Details, and then click **Open In Tab** in the [Action menu](#) that displays, to display the record Details under a new tab on the record list page (see [Record Details as Tabs](#)).

Database Connection Details

The following Database Connection Details is for an existing Database Connection. See the [field descriptions](#), below, for a description of all fields that display in the Database Connection Details.





For information on how to access additional details - such as [Metadata](#) and complete [database Details](#) - for Database Connections (or any type of record), see [Records](#).

Database Connection Details Field Descriptions

The following table describes the fields, buttons, and tabs that display in the Database Connection Details.

Field Name	Description
Details	This section contains detailed information about the Database Connection.
Name	Name (maximum 40 alphanumeric characters) used within the Controller to identify this resource. It is the responsibility of the user to develop a workable naming scheme for resources.
Version	System-supplied; version number of the current record, which is incremented by the Controller every time a user updates a record. Click the Versions tab to view previous versions. For details, see Record Versioning .
Description	Description of this record. (Maximum = 255 characters.)
Member of Business Services	User-defined; Allows you to select one or more Business Services that this record belongs to. (You also can Check All or Uncheck All Business Services for this record.) You can select up to 62 Business Services for any record type, and enter a maximum of 2048 characters for each Business Service. If the Business Service Visibility Restricted Universal Controller system property is set to true, depending on your assigned (or inherited) Permissions or Roles , Business Services available for selection may be restricted.

<p>Database Type</p>	<p>Type of database.</p> <p>Options:</p> <ul style="list-style-type: none"> • MySQL • MS SQL Server • Oracle • DB2 • Sybase SQL Anywhere • Other <p>Note</p> <p> When using the database type Other, you will need to source the JDBC driver from your database vendor. Simply place the JDBC driver .jar file into the \$CATALINA_HOME/webapps/uc/WEB-INF/lib directory and restart Tomcat. Format the Connection URL and Driver fields per the database vendor's documentation.</p> <p>Note</p> <p> Customers have reported difficulty establishing secure SQL connections using the jTDS open source JDBC driver for Microsoft SQL Server (Driver=net.sourceforge.jtds.jdbc.Driver) when SSL/TLS is enabled on the server.</p> <p>We have received feedback that the issue can be resolved by installing a patched version of the jTDS driver from bug report https://sourceforge.net/p/jtds/bugs/725/.</p> <p>Stonebranch only bundles the official jTDS release, currently 1.3.1, with the Universal Controller.</p> <p>We do not include unofficial patches, and if you decide to use them, you do so at your own risk.</p>
<p>Credentials</p>	<p>Credentials for this Database Connection. Click the Details icon to create a new Credentials record, or select an existing Credentials record from the drop-down list.</p>
<p>Connection URL</p>	<p>URL of the database.</p> <p>If you are using a MySQL database and want the ability to issue multiple SQL commands from a single task, you need to enable this by appending the following string to the end of the connection string:</p> <div style="border: 1px solid #ccc; padding: 5px; margin: 10px 0;"> <p>?allowMultiQueries=true</p> </div> <p>For example:</p> <div style="border: 1px solid #ccc; padding: 5px; margin: 10px 0;"> <p>jdbc:mysql://localhost:3306/uc?allowMultiQueries=true</p> </div>
<p>Driver</p>	<p>Name of the JDBC driver.</p>
<p>Maximum Rows</p>	<p>If necessary, specifies a limit to the number of rows you want returned by the SQL statement.</p>
<p>Metadata</p>	<p>This section contains Metadata information about this record.</p>
<p>UUID</p>	<p>Universally Unique Identifier of this record.</p>

Updated By	Name of the user that last updated this record.
Updated	Date and time that this record was last updated.
Created By	Name of the user that created this record.
Created	Date and time that this record was created.
Buttons	This section identifies the buttons displayed above and below the Database Connection Details that let you perform various actions.
Save	Saves a new Database Connection record in the Controller database.
Save & New	Saves a new record in the Controller database and redisplay empty Details so that you can create another new record.
Save & View	Saves a new record in the Controller database and continues to display that record.
New	Displays empty (except for default values) Details for creating a new record.
Update	Saves updates to the record.
Test Connection	After saving the record to the database, click Test Connection to run a connection test.
Copy	Creates a copy of this Database Connection, which you are prompted to rename.
Delete	Deletes the current record.
Refresh	Refreshes any dynamic data displayed in the Details.
Close	For pop-up view only; closes the pop-up view of this Database Connection.
Tabs	This section identifies the tabs across the top of the Database Connection Details that provide access to additional information about the Database Connection.
SQL Tasks	Lists all SQL tasks that are using this Database Connection.
Stored Procedure Tasks	Lists all Stored Procedure tasks that are using this Database Connection.
Versions	Stores copies of all previous versions of the current record. See Record Versioning .

Copying Database Connections

- [Overview](#)
- [Copying One or More Database Connections from a Database Connections List](#)
- [Copying a Database Connection from the Database Connection Details](#)
- [Copy Permissions](#)

Overview

You can make copies of all Universal Controller records, including Database Connections, using the standard method for [Copying a Record](#): selecting **Insert** on the [Action menu](#).

However, you also can use the Copy action on the Database Connections [Action menu](#) or the Copy button in the Database Connections Details.

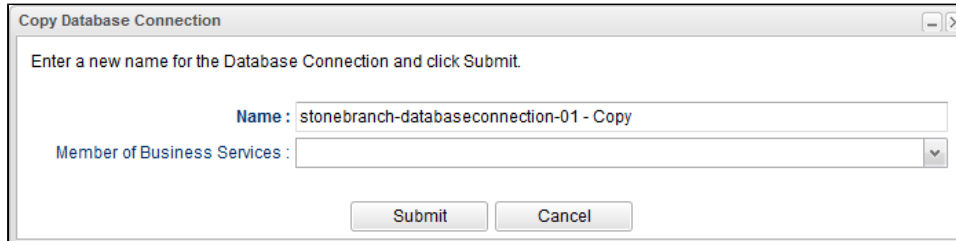
Copying One or More Database Connections from a Database Connections List

Step 1	From the Agents & Connections navigation pane, select System > Database Connections to display the Database Connections list.
Step 2	Locate the Database Connection(s) you want to copy (see Filtering).

Step 3 Copy the Database Connection(s):

Copy One Database Connection

1. Right-click the **Database Connection Name**.
2. On the [Action menu](#), select **Copy**. A Copy Database Connection pop-up dialog displays.



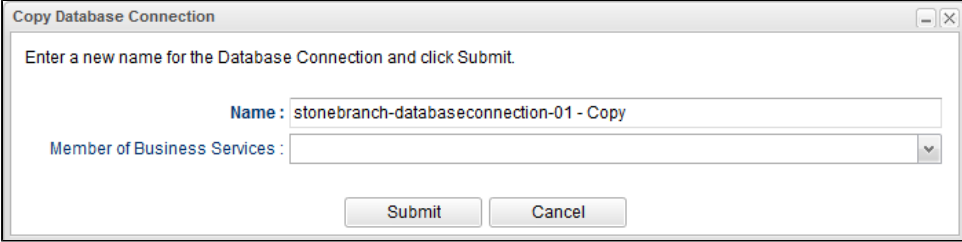
3. Enter a new name for the Database Connection and, optionally, select any [Business Services](#) that you want the Database Connection assigned to.
4. Click **Submit** to create a copy of the Database Connection.

Copy Multiple Database Connections

1. Ctrl-Click the Database Connections you want to copy.
2. Right-click any of the selected Database Connections.
3. On the [Action menu](#), select **Copy**.
4. On the Confirmation pop-up that displays, click **OK**. The copied Database Connections are added to the list, with **-Copy** added as a suffix to the Database Connection Name for each Database Connection. If a Database Connection with that **-Copy** name already exists, another copy is not created.

Copying a Database Connection from the Database Connection Details

Step 1 Select a Database Connection from the Database Connections list. The [Database Connection Details](#) for that Database Connection displays.

<p>Step 2</p>	<p>Either:</p> <ul style="list-style-type: none"> • Click the Copy button. • Right-click the Details to display the Action menu, and then click Copy. <p>A Copy Database Connection pop-up dialog displays.</p> 
<p>Step 3</p>	<p>Enter a new name for the Database Connection and, optionally, select any Business Services that you want the Database Connection assigned to.</p>
<p>Step 4</p>	<p>Click Submit to create a copy of the Database Connection.</p>

Copy Permissions

To copy a Database Connection, you must have both Read [permission](#) and Copy command permission for the Database Connection you are copying, in addition to having Create permission for the copied Database Connection.

SAP Connections

- [Overview](#)
- [Creating an SAP Connection](#)
 - [SAP Connection Details](#)
 - [SAP Connection Details Field Descriptions](#)

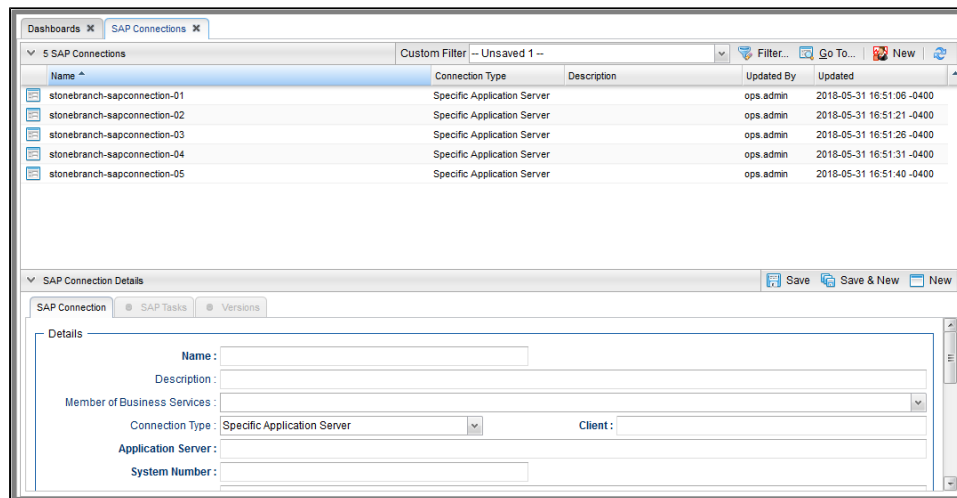
Overview

SAP Connections provide all the SAP server information necessary for Universal Controller to execute an [SAP Task](#) on an SAP system. These instructions assume the user is familiar with SAP.

Creating an SAP Connection

Step 1 From the [Agents & Connections](#) navigation pane, select **System > SAP Connections**. The SAP Connections list displays.

Below the list, SAP Connection Details for a new SAP Connection displays.



Step 2	Enter / select Details for a new SAP Connection, using the field descriptions below as a guide. <ul style="list-style-type: none">• Required fields display an asterisk (*) after the field name.• Default values for fields, if available, display automatically. To display more of the Details fields on the screen, you can either: <ul style="list-style-type: none">• Use the scroll bar.• Temporarily hide the list above the Details.• Click the New button above the list to display a pop-up version of the Details.
Step 3	Click a Save button. The SAP Connection is added to the database, and all buttons and tabs in the SAP Connection Details are enabled.

Note

To [open](#) an existing record on the list, either:

- Click a record in the list to display its record Details below the list. (To clear record Details below the list, click the **New** button that displays above and below the Details.)
- Clicking the [Details icon](#) next to a record name in the list, or right-click a record in the list and then click **Open** in the [Action menu](#) that displays, to display a pop-up version of the record Details.
- Right-click a record in the a list, or open a record and right-click in the record Details, and then click **Open In Tab** in the [Action menu](#) that displays, to display the record Details under a new tab on the record list page (see [Record Details as Tabs](#)).

SAP Connection Details


The following SAP Connection Details is for an existing SAP Connection. See the [field descriptions](#), below, for a description of all fields that display in the SAP Connection Details.

For information on how to access additional details - such as [Metadata](#) and complete [database Details](#) - for SAP Connections (or any type of record), see [Records](#).

SAP Connection Details Field Descriptions

The following table describes the fields, buttons, and tabs that display in the SAP Connection Details.

Field Name	Description
Details	This section contains detailed information about the SAP Connection.
Name	Name (maximum 40 alphanumeric characters) used within the Controller to identify this resource. It is the responsibility of the user to develop a workable naming scheme for resources.
Version	System-supplied; version number of the current record, which is incremented by the Controller every time a user updates a record. Click the Versions tab to view previous versions. For details, see Record Versioning .

Description	Description of this record. (Maximum = 255 characters.)
Member of Business Services	<p>User-defined; Allows you to select one or more Business Services that this record belongs to. (You also can Check All or Uncheck All Business Services for this record.)</p> <p>You can select up to 62 Business Services for any record type, and enter a maximum of 2048 characters for each Business Service.</p> <p>If the Business Service Visibility Restricted Universal Controller system property is set to true, depending on your assigned (or inherited) Permissions or Roles, Business Services available for selection may be restricted.</p>
Connection Type	<p>Type of SAP connection.</p> <p>Options:</p> <ul style="list-style-type: none"> • Specific Application Server Connection to a specific SAP application server (type A RFC connection). • Load Balancing Connection to an SAP system where the application server is determined by load balancing (type B RFC connection).
Application Server	If Connection Type = Specific Application Server; ASHOST parameter; Host name of an SAP application server. If the path to the server goes through SAP routers, prefix the host name with the SAP router string.
Client	<p>CLIENT parameter; SAP Client number. This field is not required if Connection Type is Load Balancing.</p> <p>Note </p> <p>Originally, the Client field was not available for a Load Balancing Connection Type; therefore, you may have applied the CLIENT parameter on each SAP task as an SAP Command option or used a "destination" connection via the <code>sapnwrfc.ini</code> file. For this reason, the Client field is optional when the Connection Type is Load Balancing even though. normally, you would want to specify it.</p>
System Number	If Connection Type = Specific Application Server; SYSNR parameter.
Gateway	If Connection Type = Specific Application Server; GWHOST parameter; Host name of the SAP gateway.
Gateway Service	If Connection Type = Specific Application Server; GWSERV parameter; Service name of the SAP gateway.
System ID	If Connection Type = Load Balancing; R3NAME/SYSID parameter; System ID of the SAP system to which you want to connect.
Message Server	If Connection Type = Load Balancing; MSHOST parameter; Host name of the message server.
Group	If Connection Type = Load Balancing; GROUP parameter; Application servers group name.
Use Symbolic Names	<p>If Connection Type = Load Balancing; USE_SYMBOLIC_NAMES parameter; Specification for whether or not to use symbolic service names.</p> <p>Options:</p> <ul style="list-style-type: none"> • No • Yes
Single Sign-On Ticket	Path to a file that contains the actual value for the MYSAPSSO2 parameter.

X.509 Certificate	Path to a file that contains the actual value for the X509CERT parameter.
SAProuter	SAPROUTER parameter.
SNC Options	This section contains detailed information about the SAP Secure Network Communications (SNC).
SNC Mode	SNC_MODE parameter; Specification for whether or not SNC is activated. Options: <ul style="list-style-type: none"> • Off • On
SNC Library	SNC_LIB parameter; Path to the third-party security library for SNC.
SNC My Name	SNC_MYNAME parameter; Token/identifier representing the external RFC program.
SNC Partner Name	SNC_PARTNERNAME parameter; Token/identifier representing the back-end system.
SNC Quality of Protection	SNC_QOP parameter; Quality of protection level. Options: <ul style="list-style-type: none"> • Authentication Only • Integrity Protection • Privacy Protection • Default Protection • Maximum Protection
SNC Single Sign-On	SNC_SSO parameter; Specification for whether or not to use single sign-on for SNC. Options: <ul style="list-style-type: none"> • No • Yes
Buttons	This section identifies the buttons displayed above and below the SAP Connection Details that let you perform various actions.
Save	Saves a new SAP Connection record in the Controller database.
Save & New	Saves a new record in the Controller database and redisplay empty Details so that you can create another new record.
Save & View	Saves a new record in the Controller database and continues to display that record.
New	Displays empty (except for default values) Details for creating a new record.
Update	Saves updates to the record.

Copy	Creates a copy of this SAP Connection, which you are prompted to rename.
Delete	Deletes the current record.
Refresh	Refreshes any dynamic data displayed in the Details.
Close	For pop-up view only; closes the pop-up view of this SAP Connection.
Tabs	This section identifies the tabs across the top of the SAP Connection Details that provide access to additional information about the SAP Connection.
SAP Tasks tab	Lists all SAP tasks that use this SAP connection.
Versions tab	Stores copies of all previous versions of the current record. See Record Versioning .

Copying SAP Connections

- [Overview](#)
- [Copying One or More SAP Connections from an SAP Connections List](#)
- [Copying an SAP Connection from the SAP Connection Details](#)
- [Copy Permissions](#)

Overview

You can make copies of all Universal Controller records, including SAP Connections, using the standard method for [Copying a Record](#): selecting **Insert** on the [Action menu](#).

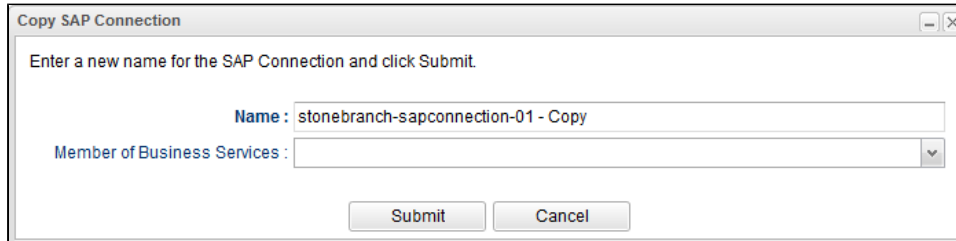
However, you also can use the Copy action on the SAP Connections [Action menu](#) or the Copy button in the SAP Connections Details.

Copying One or More SAP Connections from an SAP Connections List

Step 1	From the Agents & Connections navigation pane, select System > SAP Connections to display the SAP Connections list.
Step 2	Locate the SAP Connections(s) you want to copy (see Filtering).

Step 3 Copy the SAP Connection(s):**Copy One SAP Connection**

1. Right-click the **SAP Connection Name**.
2. On the [Action menu](#), select **Copy**. A Copy SAP Connection pop-up dialog displays.



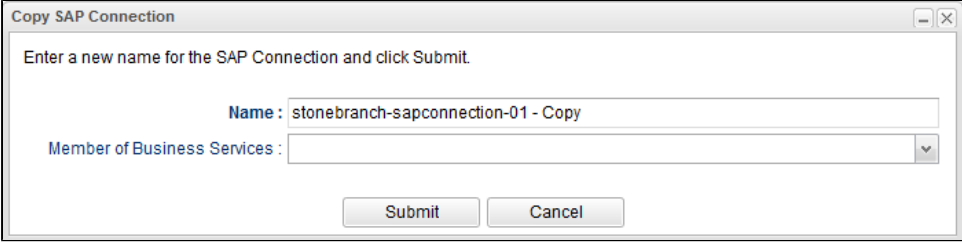
3. Enter a new name for the SAP Connection and, optionally, select any [Business Services](#) that you want the SAP Connection assigned to.
4. Click **Submit** to create a copy of the SAP Connection.

Copy Multiple SAP Connections

1. Ctrl-Click the SAP Connections you want to copy.
2. Right-click any of the selected SAP Connections.
3. On the [Action menu](#), select **Copy**.
4. On the Confirmation pop-up that displays, click **OK**. The copied SAP Connections are added to the list, with **- Copy** added as a suffix to the SAP Connection Name for each SAP Connection. If an SAP Connection with that **- Copy** name already exists, another copy is not created.

Copying an SAP Connection from the SAP Connection Details

- | | |
|---------------|--|
| Step 1 | Select an SAP Connection from the SAP Connections list. The SAP Connection Details for that SAP Connection displays. |
|---------------|--|

<p>Step 2</p>	<p>Either:</p> <ul style="list-style-type: none"> • Click the Copy button. • Right-click the Details to display the Action menu, and then click Copy. <p>A Copy SAP Connection pop-up dialog displays.</p> 
<p>Step 3</p>	<p>Enter a new name for the SAP Connection and, optionally, select any Business Services that you want the SAP Connection assigned to.</p>
<p>Step 4</p>	<p>Click Submit to create a copy of the SAP Connection.</p>

Copy Permissions

To copy an SAP Connection, you must have both Read [permission](#) and Copy command permission for the SAP Connection you are copying, in addition to having Create permission for the copied SAP Connection.

PeopleSoft Connections

- [Overview](#)
- [Creating a PeopleSoft Connection](#)
 - [PeopleSoft Connection Details](#)
 - [PeopleSoft Connection Details Field Descriptions](#)

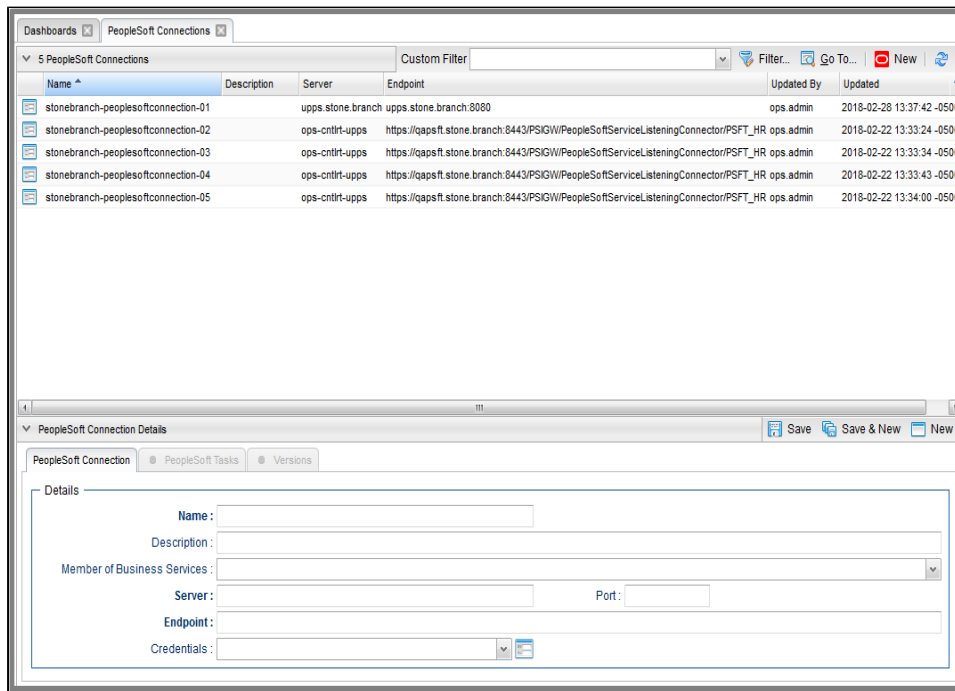
Overview

PeopleSoft Connections provide all the PeopleSoft server information necessary for Universal Controller to execute a [PeopleSoft task](#) on a PeopleSoft system. These instructions assume the user is familiar with PeopleSoft.

Creating a PeopleSoft Connection

Step 1 From the [Agents & Connections](#) navigation pane, select **System > PeopleSoft Connections**. The PeopleSoft Connections list displays.

Below the list, PeopleSoft Connection Details for a new PeopleSoft Connection displays.



Step 2	<p>Enter / select Details for a new PeopleSoft Connection, using the field descriptions below as a guide.</p> <ul style="list-style-type: none"> • Required fields display an asterisk (*) after the field name. • Default values for fields, if available, display automatically. <p>To display more of the Details fields on the screen, you can either:</p> <ul style="list-style-type: none"> • Use the scroll bar. • Temporarily hide the list above the Details. • Click the New button above the list to display a pop-up version of the Details.
Step 3	<p>Click a Save button. The PeopleSoft Connection is added to the database, and all buttons and tabs in the PeopleSoft Connection Details are enabled.</p>

Note



To [open](#) an existing record on the list, either:

- Click a record in the list to display its record Details below the list. (To clear record Details below the list, click the **New** button that displays above and below the Details.)
- Clicking the [Details icon](#) next to a record name in the list, or right-click a record in the list and then click **Open** in the [Action menu](#) that displays, to display a pop-up version of the record Details.
- Right-click a record in the a list, or open a record and right-click in the record Details, and then click **Open In Tab** in the [Action menu](#) that displays, to display the record Details under a new tab on the record list page (see [Record Details as Tabs](#)).

PeopleSoft Connection Details


The following PeopleSoft Connection Details is for an existing PeopleSoft Connection. See the [field descriptions](#), below, for a description of all fields that display in the PeopleSoft Connection Details.

For information on how to access additional details - such as [Metadata](#) and complete [database Details](#) - for PeopleSoft Connections (or any type of record), see [Records](#).

PeopleSoft Connection Details Field Descriptions

The following table describes the fields, buttons, and tabs that display in the PeopleSoft Connection Details.

Field Name	Description
------------	-------------

Details	This section contains detailed information about the PeopleSoft Connection.
Name	Name (maximum 40 alphanumeric characters) used within the Controller to identify this resource. It is the responsibility of the user to develop a workable naming scheme for resources.
Version	System-supplied; version number of the current record, which is incremented by the Controller every time a user updates a record. Click the #Versions tab to view previous versions. For details, see Record Versioning .
Description	Description of this record. (Maximum = 255 characters.)
Member of Business Services	<p>User-defined; Allows you to select one or more Business Services that this record belongs to. (You also can Check All or Uncheck All Business Services for this record.)</p> <p>You can select up to 62 Business Services for any record type, and enter a maximum of 2048 characters for each Business Service.</p> <p>If the Business Service Visibility Restricted Universal Controller system property is set to true, depending on your assigned (or inherited) Permissions or Roles, Business Services available for selection may be restricted.</p>
Server	Host name of the Name or IP address of the PeopleSoft application server.
Port	Port number for the PeopleSoft application server.
Endpoint	Web service endpoint for the PROCESSREQUEST service.
Credentials	<p>Credentials for the PeopleSoft connection.</p> <p>Note  Either the PeopleSoft Connection or the PeopleSoft task using that connection must specify PeopleSoft Credentials. If a PeopleSoft task using this PeopleSoft Connection specifies PeopleSoft Credentials, those PeopleSoft task credentials override the PeopleSoft Connection credentials.</p>
Metadata	This section contains Metadata information about this record.
UUID	Universally Unique Identifier of this record.
Updated By	Name of the user that last updated this record.
Updated	Date and time that this record was last updated.
Created By	Name of the user that created this record.
Created	Date and time that this record was created.
Buttons	This section identifies the buttons displayed above and below the PeopleSoft Connection Details that let you perform various actions.
Save	Saves a new PeopleSoft Connection record in the Controller database.
Save & New	Saves a new record in the Controller database and redispays empty Details so that you can create another new record.
Save & View	Saves a new record in the Controller database and continues to display that record.
New	Displays empty (except for default values) Details for creating a new record.

Update	Saves updates to the record.
Copy	Creates a copy of this PeopleSoft Connection, which you are prompted to rename.
Delete	Deletes the current record.
Refresh	Refreshes any dynamic data displayed in the Details.
Close	For pop-up view only; closes the pop-up view of this PeopleSoft Connection.
Tabs	This section identifies the tabs across the top of the PeopleSoft Connection Details that provide access to additional information about the PeopleSoft Connection.
PeopleSoft Tasks tab	Lists all PeopleSoft tasks that use this PeopleSoft connection.
Versions tab	Stores copies of all previous versions of the current record. See Record Versioning .

Copying PeopleSoft Connections

- [Overview](#)
- [Copying One or More PeopleSoft Connections from a PeopleSoft Connections List](#)
- [Copying a PeopleSoft Connection from the PeopleSoft Connection Details](#)
- [Copy Permissions](#)

Overview

You can make copies of all Universal Controller records, including PeopleSoft Connections, using the standard method for [Copying a Record](#): selecting **Insert** on the [Action menu](#).

However, you also can use the Copy action on the PeopleSoft Connections [Action menu](#) or the Copy button in the PeopleSoft Connections Details.

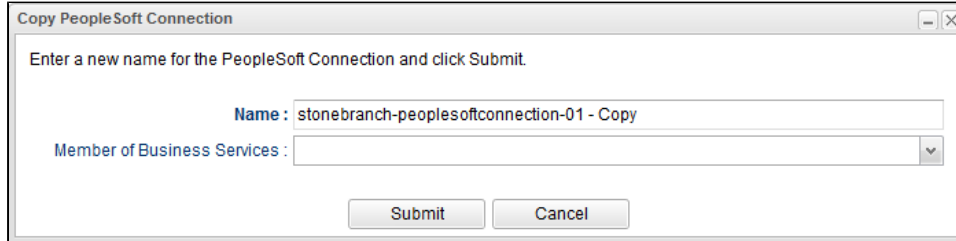
Copying One or More PeopleSoft Connections from a PeopleSoft Connections List

Step 1	From the Agents & Connections navigation pane, select System > PeopleSoft Connections to display the PeopleSoft Connections list.
Step 2	Locate the PeopleSoft Connections(s) you want to copy (see Filtering).

Step 3 Copy the PeopleSoft Connection(s):

Copy One PeopleSoft Connection

1. Right-click the **PeopleSoft Connection Name**.
2. On the [Action menu](#), select **Copy**. A Copy PeopleSoft Connection pop-up dialog displays.



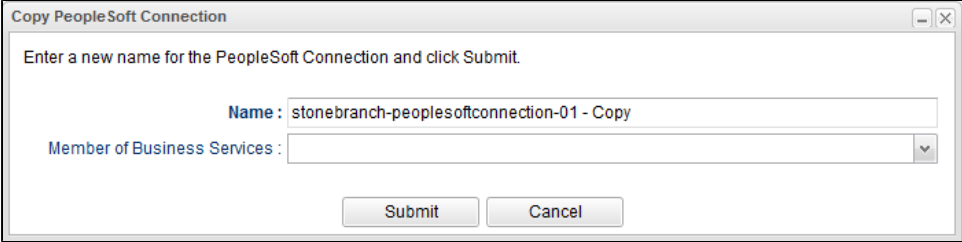
3. Enter a new name for the PeopleSoft Connection and, optionally, select any [Business Services](#) that you want the PeopleSoft Connection assigned to.
4. Click **Submit** to create a copy of the PeopleSoft Connection.

Copy Multiple PeopleSoft Connections

- Ctrl-Click the PeopleSoft Connections you want to copy.
- Right-click any of the selected PeopleSoft Connections.
- On the [Action menu](#), select **Copy**.
- On the Confirmation pop-up that displays, click **OK**. The copied PeopleSoft Connections are added to the list, with - **Copy** added as a suffix to the PeopleSoft Connection Name for each PeopleSoft Connection. If a PeopleSoft Connection with that - **Copy** name already exists, another copy is not created.

Copying a PeopleSoft Connection from the PeopleSoft Connection Details

Step 1 Select a PeopleSoft Connection from the PeopleSoft Connections list. The [PeopleSoft Connection Details](#) for that PeopleSoft Connection displays.

<p>Step 2</p>	<p>Either:</p> <ul style="list-style-type: none"> • Click the Copy button. • Right-click the Details to display the Action menu, and then click Copy. <p>A Copy PeopleSoft Connection pop-up dialog displays.</p> 
<p>Step 3</p>	<p>Enter a new name for the PeopleSoft Connection and, optionally, select any Business Services that you want the PeopleSoft Connection assigned to.</p>
<p>Step 4</p>	<p>Click Submit to create a copy of the PeopleSoft Connection.</p>

Copy Permissions

To copy a PeopleSoft Connection, you must have both Read [permission](#) and Copy command permission for the PeopleSoft Connection you are copying, in addition to having Create permission for the copied PeopleSoft Connection.